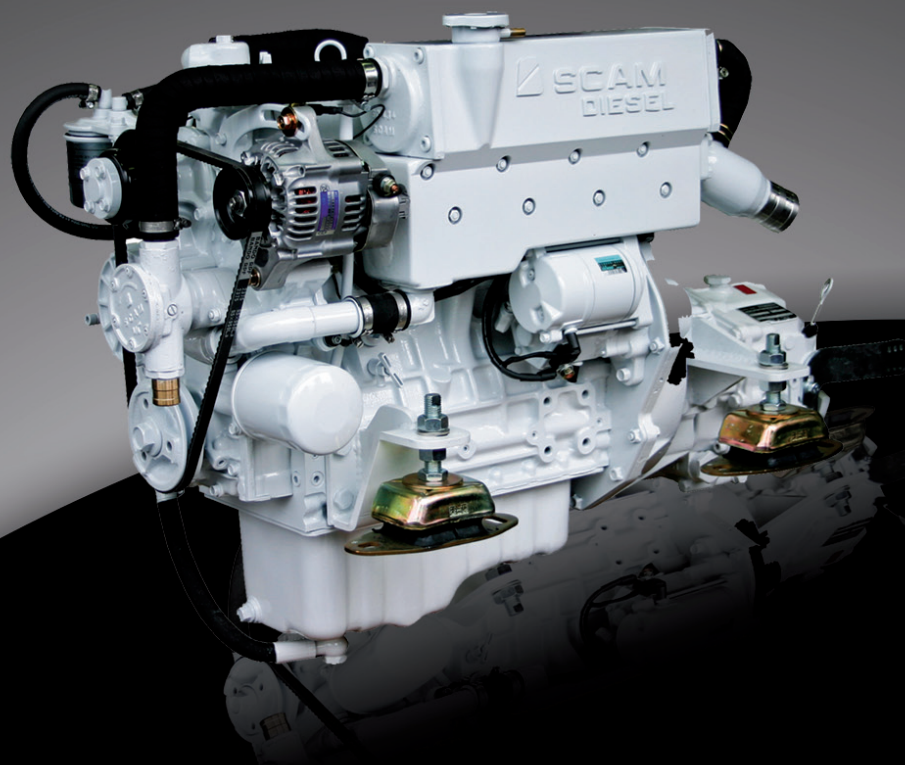


SCAM DIESEL



SD 434

SCAM DIESEL marine engines are synonymous with high quality and efficiency. Due to the design of the engines only minimal and fairly basic maintenance is required. All the parts for periodical maintenance are available from stock. The indirect water cooling system with water to sea water heat exchangers guarantees optimal working temperature which extends the engine's durability.

The new developed fuel injection system endorses low fuel consumption and environmental friendlier combustion. Every engine is supplied with a complete electrical installation, including control panel. Flexible (rubber) engine mounts support with connections for cable control. Oil extraction hand-pump is also installed on engines. As option, we offer couplings to connect a hydraulic pump or a compressor for the refrigerator.

SD 434

The basis for the SCAM DIESEL SD 434 is a carefully chosen Kubota engine, which is marinized using our longtime experience and expertise in this field. We have been able to achieve:

- higher power rating
- higher torque rating
- lower exhaust gas emission values

Kubota's original E-TVCS (Three Vortex Combustion System) has been improved. The combustion chamber and piston recess were optimized to achieve a 50% lower particulate matter (PM) level.

Standard equipment

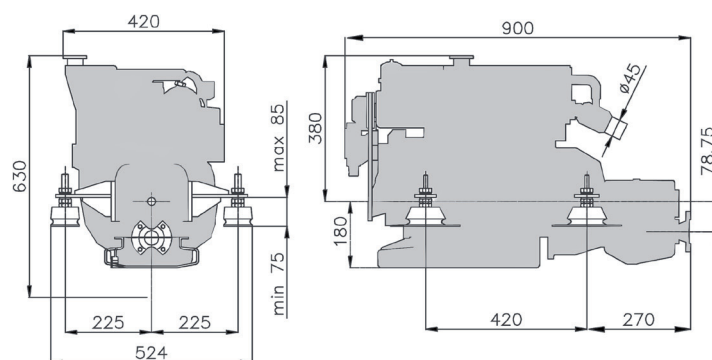
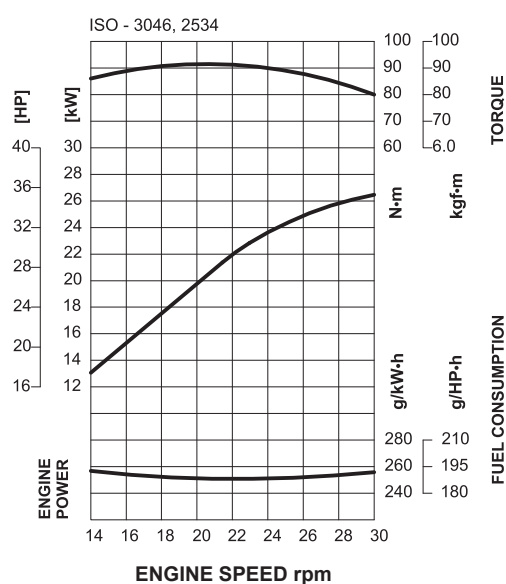
- digital instrument panel with extension cable
- flexible engine mounts
- marine gearbox Twin Disc Technodrive TMC 60; ratio 1,52-2,0-2,5-2,94:1
- TMC 60A; ratio 2,0-2,45:1

Additional equipment

- analog instrument panel (RPM counter, hour counter, oil pressure gauge, temperature gauge for the coolant, light alarm buzzer, sound alarm buzzer)
- shafting
- propeller
- single lever control
- cable for single lever control
- flexible exhaust hose
- water lock for exhaust gas
- fuel tank

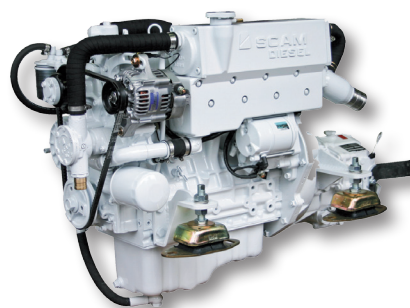
All SCAM DIESEL marine engines come with a 24 months warranty on material assembly mistakes taking effect from the date of sale.

Power, fuel consumption and torque diagram



Technical specifications

Engine type	SD 434
Basic engine	Kubota
Fuel	diesel
Injection	indirect
Cooling	closed system with fresh water and heat exchanger
Intake system	naturally aspirated
Displacement	1498 cm ³
Cylinder bore/stroke	78/78,4 mm
Number of cylinders	4
Dry weight (including gearbox)	163 kg
Max. power (flywheel)	25 kw (34 HP)
ISO 30462534	3000
Max. RPM	12V 40 A
Alternator	TMC 60 - mechanical
Marine gearbox	25 mm
Sea water connection diameter	8 mm
Fuel hose connection diameter	45 mm
Exhaust pipe internal diameter	



Licensed distributor

www.scam-marine.hr



SCAM MARINE d.o.o.
Pešćići bb, 51216 Viškovo, CROATIA
tel. +385 51 503 621
fax: +385 51 503 629
info@scam-marine.hr

MURTER Office
Put gradine bb
22243 Murter
tel. +385 22 435 735
fax: +385 22 435 736

ZADAR Office
Biogradska 2
23000 Zadar
tel. +385 23 313 501
fax: +385 23 302 201